

**Type: CDRH4D16FC**

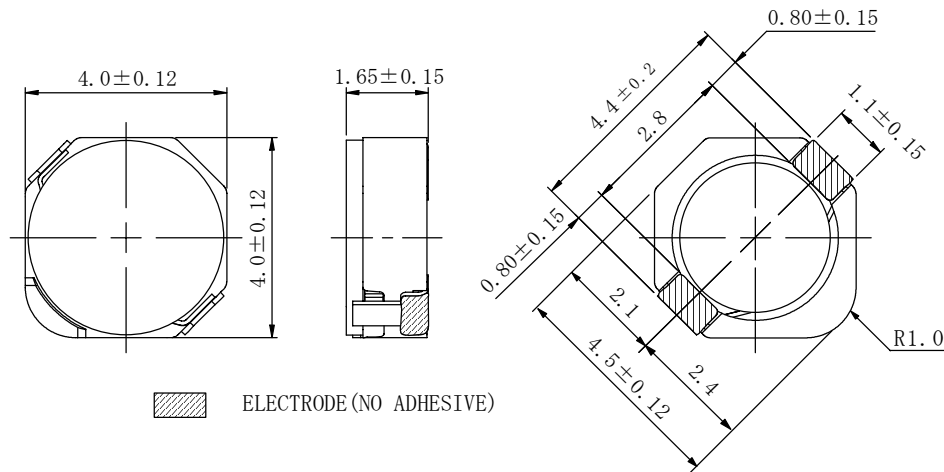
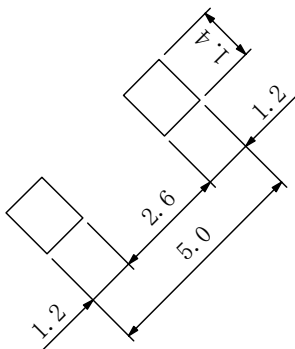
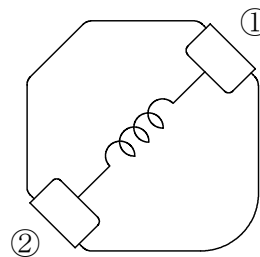
# SONY USE ONLY

**◆ Product Description**

- 4.12×4.12mm Max.(L×W), 1.8mm Max. Height.
- Inductance range: 4.7~33.0 μ H
- Rated current range: 0.43~1.2A

**◆ Feature**

- Magnetically shielded construction.
- Flat Wire used, Lower Heating Loss Type.
- Ideally used in DSC/DVC, Notebook PC, Game machine, DVD, LCD TV, STB etc as DC-DC Converter inductors.
- RoHS Compliance.

**◆ Dimensions (mm)**

**◆ Land Pattern (mm)**

**◆ Schematics (Bottom)**


**Type: CDRH4D16FC**
**◆ Specification**

Part No.	Packing	Stamp	Inductance [Within] 100kHz/0.1V	D.C.R.(mΩ) [Within] (at 20°C)	Saturation current [MAX.](A) ※1	Temperature rise current [MAX.](A) ※2
1-456-995-22	REEL	A	4.7 μH ± 20%	45 +20% -30%	1.20	1.8
1-456-995-12	BOX					
1-456-996-22	REEL	B	10 μH ± 20%	98 +20% -30%	0.80	1.00
1-456-996-12	BOX					
1-456-997-22	REEL	C	33 μH ± 20%	360 +20% -30%	0.43	0.50
1-456-997-12	BOX					

※1. Saturation current: The DC current at which the inductance decreases to 70% of it's nominal value.

※2. Temperature rise current: The DC current when the temperature rise is  $\Delta t = 40^{\circ}\text{C}$  ( $T_a = 20^{\circ}\text{C}$ ).

# SONY USE ONLY